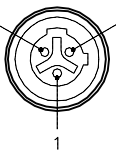
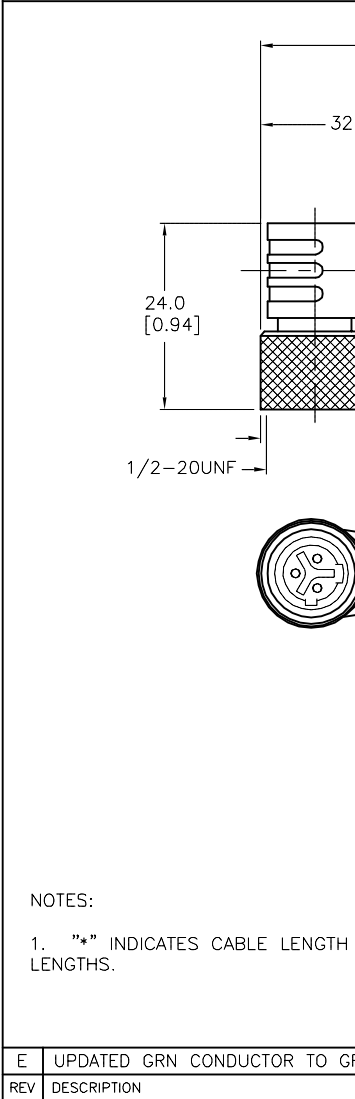



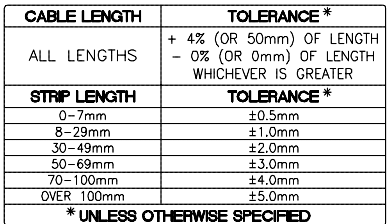
# FEMALE END VIEW



1 = GREEN/YELLOW  
2 = RED/BLACK  
3 = RED/WHITE



SPECIFICATIONS	
CONTACT CARRIER MATERIAL/COLOR	NYLON/BLACK
MOLDED HEAD MATERIAL/COLOR	TPU/YELLOW
CONTACT MATERIAL/PLATING	BRASS/GOLD
COUPLING NUT MATERIAL/FINISH	STAINLESS STEEL/PASSIVATED
RATED CURRENT [A]	4.0 A
RATED VOLTAGE [V]	250 V
OUTER JACKET MATERIAL/COLOR	PVC/YELLOW
CONDUCTOR INSULATION MATERIAL	PVC
NUMBER OF CONDUCTORS [AWG]	3x22 AWG
TEMPERATURE RANGE	-40°C to +105°C (-40°F to +221°F)
PROTECTION CLASS	NEMA 1,3,4,6P AND IEC IP67, IP68, IP69K



THIS DRAWING IS CONFIDENTIAL AND THE PROPERTY OF TURCK INC. USE OF THIS DOCUMENT WITHOUT WRITTEN PERMISSION IS PROHIBITED.				3000 CAMPUS DRIVE MINNEAPOLIS, MN 55441 1-800-544-7769 (763) 553-7300 (763) 553-0708 fax <a href="http://www.turck.us">www.turck.us</a>	
DFT	RDS	DATE	12/20/05	DESCRIPTION  WKBV 3T-*	
APVD		SCALE	1 = 1		
UNIT OF MEASUREMENT  <b>MILLIMETER [ INCH ]</b>				IDENTIFICATION NO.	
DO NOT SCALE THIS DRAWING				REV  E	
FILE: 777012279				SHEET 1 OF 1	